

Adjust Viewing Area

In the Configuration menu there is an Adjust Viewing Area Button. This button gives you the ability to set guide-lines for the edges of the NTSC output screen.

Setting your viewing area

- ☞ First, click on the **ADJUST VIEWING AREA BUTTON**.
- ☞ There will then be eight little square boxes that are almost blended into the background displayed in each corner and in the center of the outside edge of the screen. There is also one in the very center of the screen.
- ☞ To adjust the size of screen, you may want to have the TV monitor displaying the end result close by. This will make it easier to adjust the viewing area.
- ☞ With the mouse simply left click on any of the outside boxes and drag you can shift the whole screen by left clicking on the very center box and dragging.
- ☞ Once the screen is set the way you want it press **ENTER**, the settings will take effect and the adjustment boxes will disappear.

Audio Ducker

The Audio Ducker button is found in the Configuration window. With this feature, you can drop down background music being played over the line input channel while Wave and/or Midi files are played along with a page.

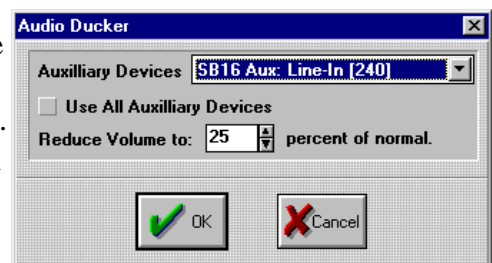
TEC & TEBBS - skip this section.

Hardware Setup

- ☞ First, you must have a sound card in the GRAC system which must have an auxiliary input such as line-in.
- ☞ Plug your audio unit into the line-in of the sound card.
- ☞ Take another audio cable and plug one end into the line-out of the sound card and the other end into the audio line-in of the modulator.

Software Setup

- ☞ Click on the red **CONFIGURATION** button in the Main Menu.
- ☞ Click on **AUDIO DUCKER** to bring up its window.
- ☞ Depending on what sound card you have, what you can select in the Auxiliary Devices window will vary. Some will have options like Midi, Wave, Line-in, CD, Mic, and Master. If this is the case, you will probably want to select Line-in. Some will not have any options to choose from, in which case you just leave it the way it is.
- ☞ Use All Auxiliary Devices should NOT be checked. Only select this option if the Audio Duck does not work any other way.
- ☞ Click on the arrows to set the volume the background music will drop down to.
- ☞ Click on **OK** to accept the settings.

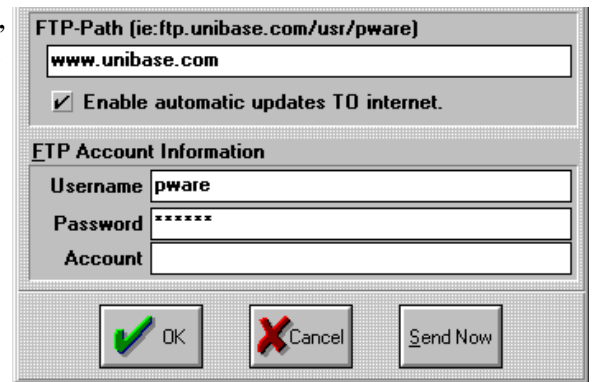
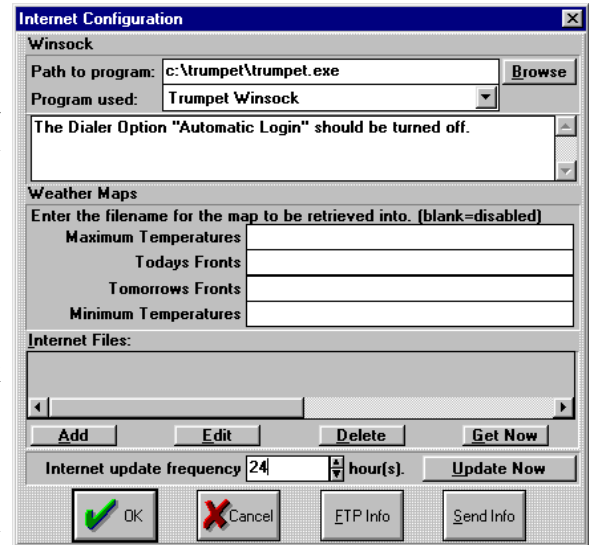


Internet Communications

The Internet Communications can be accessed from the Configuration Menu. It is used to send the schedule from a Creation system to a Remote system over the Internet and avoid long distance calls.

Setting up the Internet Communications - For the Creation System

- ☞ From the Main Menu click on the red **CONFIGURATION** button and then click on the **INTERNET** button to bring up the Internet Configuration window.
- ☞ If you have a constant connection to the Internet then leave the Path to Program blank.
- ☞ If you are using Trumpet Winsock or Quarterdeck Winsock then type in the program path and name in the Path to Program space or click on **BROWSE** to fill in this space.
- ☞ **NOTE:** The system initiates the winsock which uses the login script file to dial the phone and enter parameters, passwords, etc.
- ☞ Select the type of connection you will be using. The Message Window will change in accordance to the type of connection you have chosen.
- ☞ Now click on the **SEND INFO** button to display the Transmit Schedule(s) window.
- ☞ Fill in the FTP-Path, User Name, Password, and Account. (You may have to consult your local Internet provider to get this info, but once it is set up you should not have to change it.)
- ☞ Click on **ENABLE AUTOMATIC UPDATES TO Internet** if you want the schedule(s) you set up to automatically be sent to the Internet every XX hours. (The hours are set at the bottom of the Internet Configuration window.)
- ☞ You are now ready to send schedules over the Internet.



GRAC Display-Only, TEC and TEBBS - skip this section.

You can also use keyboard shortcuts.

- ☞ From the Master Menu press **C** (for Configuration) and then press the **TAB** key until it highlights the Internet button. Press **ENTER** or the **SPACE BAR** to select it and bring up the Internet Configuration window.
- ☞ If you have a constant connection to the Internet then leave the Path to Program blank.
- ☞ If you are using Trumpet Winsock or Quarterdeck Winsock then type in the program path and name in the Path to Program space or press **ALT B** (for Browse) and then select the program you are using.
- ☞ **NOTE:** The system initiates the winsock which uses the login script file to dial the phone and enter parameters, passwords, etc.
- ☞ Click on the **τ** at the end of the Program Used window to select the type of connection you

will be using. The Message Window will change in accordance to the type of connection you have chosen.

- ☞ Now press **ALT S** (for Send Info) to display the Transmit Schedule(s) window.
- ☞ Fill in the FTP-Path, User Name, Password, and Account. (You may have to consult your local Internet provider to get this info, but once it is set up you should not have to change it.)
- ☞ Click on **ENABLE AUTOMATIC UPDATES TO Internet** (no keyboard shortcut) if you want the schedule(s) you set up to automatically be sent to the Internet every XX hours. (The hours are set at the bottom of the Internet Configuration window.)
- ☞ You are now ready to send schedules over the Internet.

Selecting Schedules to Send to a Remote System

- ☞ In the Transmit Schedule(s) window click on **ADD** to bring up the Transmit Internet Schedule window.
 - ☞ Enter in the 6 digit number of the software key attached to the *Remote System*. (The software key is plugged into the parallel port of the computer. The 6 digit number can also be identified by pressing **ALT I** while at the Main Menu of the *Remote System* and looking at the Serial #. (Ignore the two letters at the start of the serial #.))
-
- ☞ Now type in the schedule path and name or click on **BROWSE** to select the schedule to send.
 - ☞ Click on **OK** to accept what has been entered and to return to the Transmit Schedule(s) window.
 - ☞ Click on **SEND NOW** to send the schedule and all associated pages, horizontal crawls, graphics, etc. to the Internet. (NOTE: If you want have the schedule updated every XX hours you must set that update time *before* you click on Send Now.)
 - ☞ Repeat the above steps to add more schedules to the list if you have more than one remote system.

You can also use keyboard shortcuts.

- ☞ In the Transmit Schedule(s) Menu press **ALT A** (for Add) to bring up the Transmit Internet Schedule window.
- ☞ Enter in the 6 digit number of the software key attached to the *Remote System*. (The key is plugged into the parallel port of the computer. The 6 digit number can also be identified by pressing **ALT I** while at the Master Menu of the *Remote System* and looking at the Serial #. (Ignore the two letters at the start of the serial #.))
- ☞ Now type in the schedule path and name or press **ALT B** (for browse) to select the schedule to send.
- ☞ Press **TAB** until OK is high-lighted and then press **ENTER** to accept what has been entered and to return to the Transmit Schedule(s) window.
- ☞ Press **ALT S** (for Send Now) to send the schedule and all associated pages, horizontal crawls, graphics, etc. to the Internet. (NOTE: If you want have the schedule updated every XX hours you must set that update time *before* you click on Send Now.)

GRAC Display-Only, TEC and TEBBS - skip this section.

- ☞ Repeat the above steps to add more schedules to the list if you have more than one remote system.

Edit button - Changing the settings for a Schedule set to send to a Remote System

- ☞ Click on the schedule in the Schedule Listing window that you want to change the settings on.
- ☞ Click on the **EDIT** button and the Transmit Internet Schedule window will appear.
- ☞ Make the changes to the key or the schedule path & file name and then click on **OK**.

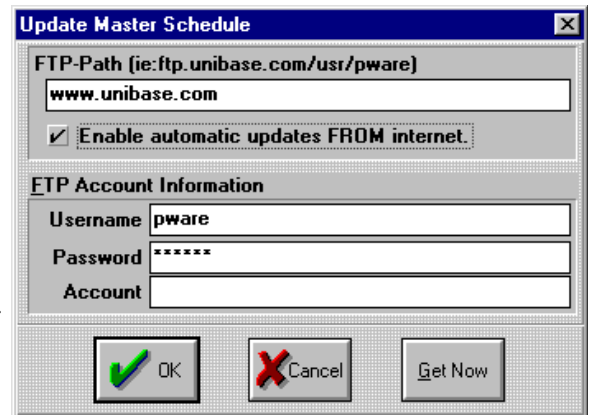
Delete button - Removing a Schedule set to Send to a Remote System

- ☞ Click on the schedule in the Schedule Listing window that you don't want to send.
- ☞ Click on the **DELETE** button and the schedule will disappear from the listing.

Setting up the Internet Communications - For the Remote System

- ☞ From the Main Menu click on the red **CONFIGURATION** button and then click on the **Internet** button to bring up the Internet Configuration window.
- ☞ If you have a constant connection to the Internet then leave the Path to Program blank.
- ☞ If you are using Trumpet Winsock or Quarterdeck Winsock then type in the program path and name in the Path to Program space or click on **BROWSE** to fill in this space.

- ☞ NOTE: The system initiates the winsock which uses the login script file to dial the phone and enter parameters, passwords, etc.
- ☞ Click on the τ at the end of the Program Used window to select the type of connection you will be using. The Message Window will change in accordance to the type of connection you have chosen.



- ☞ Now click on the **FTP INFO** button to display the Update Master Schedule window.
- ☞ Fill in the FTP-Path, User Name, Password, and Account. (You may have to consult your local Internet provider to get this info, but once it is set up you should not have to change it.)
- ☞ Click on **ENABLE AUTOMATIC UPDATES FROM Internet** if you want to automatically down-load the schedule from the Internet every XX hours. (The hours are set at the bottom of the Internet Configuration window. NOTE: If you want have the schedule updated every XX hours you must set that update time *before* you click on Get Now.)
- ☞ You are now ready to receive schedules over the Internet.

You can also use keyboard shortcuts.

- ☞ From the Master Menu press **C** (for Configuration) and then press the **TAB** key until it highlights the Internet button. Press **ENTER** or the **SPACE BAR** to select it and bring up the Internet Configuration window.
- ☞ If you have a constant connection to the Internet then leave the Path to Program blank.

GRAC Creation, TEC and TEBBS - skip this section.

GRAC Creation, TEC and TEBBS - skip this section.

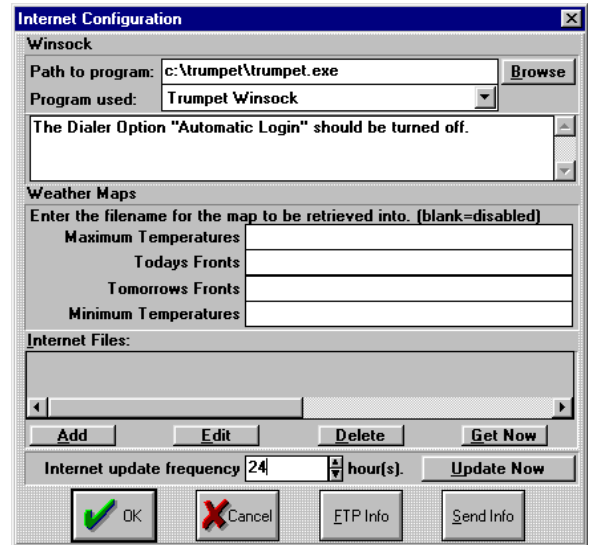
- ☞ If you are using Trumpet Winsock or Quarterdeck Winsock then type in the program path and name in the Path to Program space or press **ALT B** (for Browse) and then select the program you are using.
- ☞ NOTE: The system initiates the winsock which uses the login script file to dial the phone and enter parameters, passwords, etc.
- ☞ Click on the τ at the end of the Program Used window to select the type of connection you will be using. The Message Window will change in accordance to the type of connection you have chosen.
- ☞ Now press **ALT F** (for FTP Info) to display the Update Master Schedule window.
- ☞ Fill in the FTP-Path, User Name, Password, and Account. (You may have to consult your local Internet provider to get this info, but once it is set up you should not have to change it.)
- ☞ Click on **ENABLE AUTOMATIC UPDATES FROM Internet** (no keyboard shortcut) if you want to automatically down-load the schedule from the Internet every XX hours. (The hours are set at the bottom of the Internet Configuration window. NOTE: If you want have the schedule updated every XX hours you must set that update time *before* you click on Get Now.)
- ☞ You are now ready to receive schedules over the Internet.

To Receive the Schedule from the Internet

- ☞ Click on **GET NOW** to receive the schedule and all associated pages, horizontal crawls, graphics, etc. from the Internet. (NOTE: If you want have the schedule updated every XX hours you must set that update time *before* you click on Get Now.)
- ☞ You can also use keyboard shortcuts.
- ☞ Press **ALT G** (for Get Now) to receive the schedule and all associated pages, horizontal crawls, graphics, etc. to the Internet. (NOTE: If you want have the schedule updated every XX hours you must set that update time *before* you click on Get Now.)

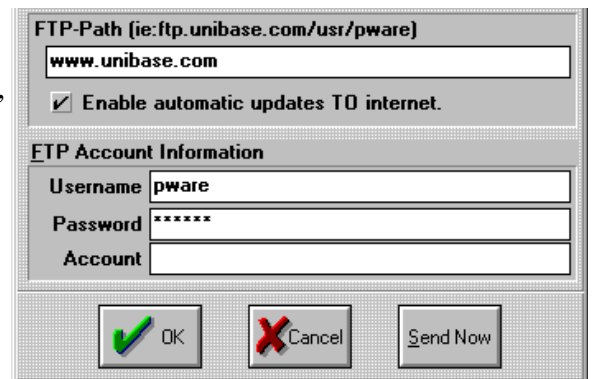
Internet Down-load of Anything

Internet Down-load of anything (graphics, text, music files, etc) can be set up in the Internet Configuration window which is in the red Configuration button. They can be set up to automatically down-load from the Internet at regular intervals and be automatically loaded into the current schedule.



Configuring the Internet Interface

- ☞ From the Main Menu click on the red **CONFIGURATION** button and then click on the **INTERNET** button to bring up the Internet Configuration window.
- ☞ If you have a constant connection to the Internet then leave the Path to Program blank.
- ☞ If you are using Trumpet Winsock or Quarterdeck Winsock then type in the program path and name in the Path to Program space or click on **BROWSE** to fill in this space.
- ☞ NOTE: The system initiates the winsock which uses the login script file to dial the phone and enter parameters, passwords, etc.
- ☞ Click on the ▼ at the end of the Program Used window to select the type of connection you will be using. The Message Window will change in accordance to the type of connection you have chosen.
- ☞ Now click on the **SEND INFO** button to display the Transmit Schedule(s) window.
- ☞ Fill in the FTP-Path, User Name, Password, and Account. (You may have to consult your local Internet provider to get this info, but once it is set up you should not have to change it.)



You can also use keyboard shortcuts.

- ☞ From the Master Menu press **C** (for Configuration) and then press the **TAB** key until it high-lights the Internet button. Press **ENTER** or the **SPACE BAR** to select it and bring up the Internet Configuration window.
- ☞ If you have a constant connection to the Internet then leave the Path to Program blank.
- ☞ If you are using Trumpet Winsock or Quarterdeck Winsock then type in the program path and name in the Path to Program space or press **ALT B** (for Browse) and then select the program you are using.
- ☞ NOTE: The system initiates the winsock which uses the login script file to dial the phone and enter parameters, passwords, etc.
- ☞ Click on the ▼ at the end of the Program Used window to select the type of connection you will be using. The Message Window will change in accordance to the type of connection you have chosen.
- ☞ Now press **ALT S** (for Send Info) to display the Transmit Schedule(s) window.

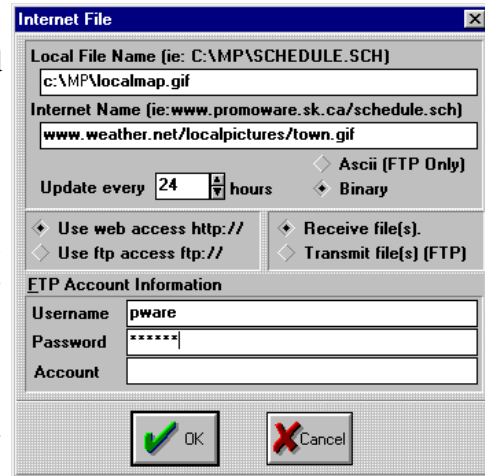
TEC & TEBBS - skip this section.

TEC & TEBBS - skip this section.

- ☞ Fill in the FTP-Path, User Name, Password, and Account. (You may have to consult your local Internet provider to get this info, but once it is set up you should not have to change it.)

Add button - Adding a File to the Down-load List

- ☞ Click on the **ADD** button to open the Internet File window.
- ☞ In the Local File Name window type in the path and file name that you want to call the file which is down-loaded.
- ☞ In the Internet Name window type in the path and file name that the file is called on the Internet. This will probably require you browsing the net to get the actual name. **NOTE: Do not include HTTP:// or FPT:// in the Internet Name.**
- ☞ Click on ▲ or ▼ beside Hours to set the frequency of the update.
- ☞ Click on **BINARY** if the file is at an HTTP site or click on **ASCII** if the file is at an FTP site.
- ☞ Click on **USE WEB ACCESS** if the file is at an HTTP site or click on **USE FTP ACCESS** if the file is at an FTP site.
- ☞ Click on **RECEIVE FILES**.
- ☞ Fill in the User Name, Password, and Account. (You may have to consult your local Internet provider to get this info.)
- ☞ Click on **OK** to return to the Internet Configuration window.
- ☞ **NOTE:** Repeat all the steps in ADD BUTTON section for each file you wish to down-load.

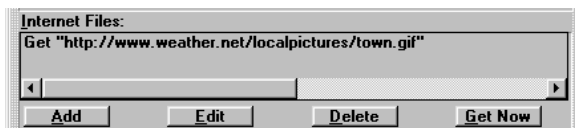


Edit button - Changing details of a File to Down-load

- ☞ Click on the file in the list which you want to edit.
- ☞ Click on **EDIT** and the Internet File window will appear.
- ☞ Edit the file information and then click on **OK** to accept those changes.

Delete button - Deleting a File from the Down-load List

- ☞ Click on the file in the list which you want to delete.
- ☞ Click on **DELETE** and the file down-load information will be removed.

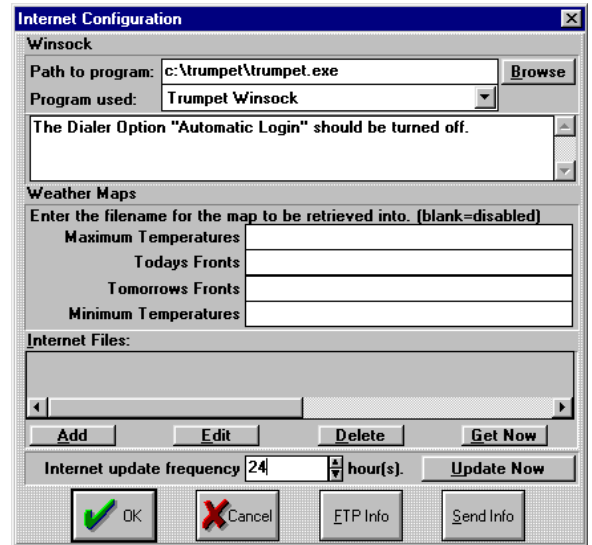


Get Now button

- ☞ Click on **GET NOW** to start the down-load process. A dialogue window will appear showing what is happening. After the down-load has finished press the **ENTER** key. (It will tell you this in the dialogue box too.) If you have set the files to down-load at certain intervals, then they will start keeping track of the time elapsed from when you clicked on Get Now.

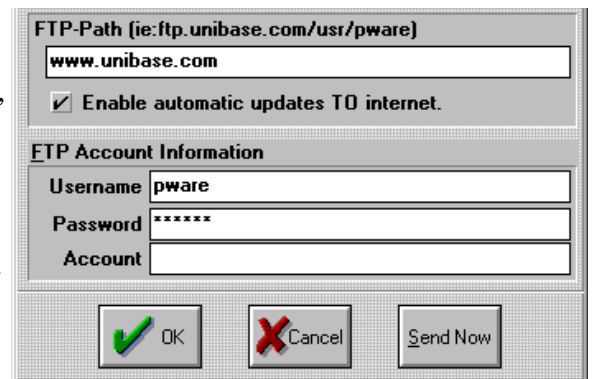
Internet Weather Maps

Internet Weather can be set up in the Internet Configuration window which is in the red Configuration button. It is used to down-load up-to four preselected weather maps from the Internet. These satellite maps are of the continental United States and show today's highs, tomorrow's lows, and fronts for today & tomorrow. They can be set up to automatically down-load from the Internet daily, and be automatically loaded into the current schedule.



Configuring the Internet Interface

- ☞ From the Main Menu click on the red **CONFIGURATION** button and then click on the **INTERNET** button to bring up the Internet Configuration window.
- ☞ If you have a constant connection to the Internet then leave the Path to Program blank.
- ☞ If you are using Trumpet Winsock or Quarterdeck Winsock then type in the program path and name in the Path to Program space or click on **BROWSE** to fill in this space.
- ☞ NOTE: The system initiates the winsock which uses the login script file to dial the phone and enter parameters, passwords, etc.
- ☞ Click on the ▼ at the end of the Program Used window to select the type of connection you will be using. The Message Window will change in accordance to the type of connection you have chosen.
- ☞ Now click on the **SEND INFO** button to display the Transmit Schedule(s) window.
- ☞ Fill in the FTP-Path, User Name, Password, and Account. (You may have to consult your local Internet provider to get this info, but once it is set up you should not have to change it.)
- ☞ If you want to have the maps updated every XX number of hours, click on the **UP** or **DOWN ARROWS** beside Internet Update Frequency to set how often the maps will be down-loaded.



You can also use keyboard shortcuts.

- ☞ From the Main Menu press **C** (for Configuration) and then press the **TAB** key until it highlights the Internet button. Press **ENTER** or the **SPACE BAR** to select it and bring up the Internet Configuration window.
- ☞ If you have a constant connection to the Internet then leave the Path to Program blank.
- ☞ If you are using Trumpet Winsock or Quarterdeck Winsock then type in the program path and name in the Path to Program space or press **ALT B** (for Browse) and then select the program you are using.
- ☞ NOTE: The system initiates the winsock which uses the login script file to dial the phone and enter parameters, passwords, etc.

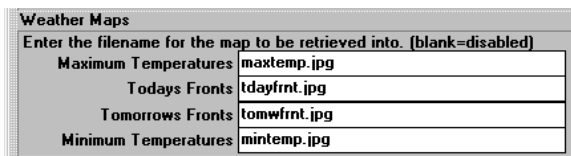
TEC & TEBBS - skip this section.

TEC & TEBBS - skip this section.

- ☞ Click on the τ at the end of the Program Used window to select the type of connection you will be using. The Message Window will change in accordance to the type of connection you have chosen.
- ☞ Now press **ALT S** (for Send Info) to display the Transmit Schedule(s) window.
- ☞ Fill in the FTP-Path, User Name, Password, and Account. (You may have to consult your local Internet provider to get this info, but once it is set up you should not have to change it.)
- ☞ If you want to have the maps updated every **XX** number of hours, press **TAB** until Internet Update Frequency is selected and then type in the frequency for the down-loaded.

Down-loading the Weather Maps

- ☞ There are four spaces where you can type in file names for the weather maps. If a space is left blank, then the weather map will not be down-loaded.
- ☞ For each weather map you want to down-load, type in a name for the graphic with a JPG extension. (Example: MAXTEMP.JPG)
- ☞ After you have typed in the weather map names, click on **OK** to save this information.
- ☞ To have MAXTEMP.JPG automatically be in the schedule, create a page with this graphic and schedule it, then the new MAXTEMP.JPG, when down-loaded, will display in the schedule in place of the old one.
- ☞ To down-load the maps click on **UPDATE NOW** (or press **ALT U**). Connection to the Internet will be made and the map(s) will be down-loaded.
- ☞ If you have set the Update Frequency to 24 hours, then every 24 hours from the time you clicked on Update Now, the maps will be down-loaded.



Moved Maps

- ☞ If the weather maps are moved or change names on the Internet, there is a way to reconfigure the software to look to the new location or use the new name.
- ☞ First, determine what the new location and/or name of the weather maps. You will need to browse the Internet to get this information.
- ☞ Second, edit the file \WINDOWS\MPGRAPH.INI. or MPTEXT.INI
 - ☞ Look for the grouping [Internet].
 - ☞ In this group find the line which says:
WeatherSite=weather.yahoo.com
and enter in the new site after the equal sign (=).
 - ☞ Now find the lines which look like this:
MaximumTemp=/graphics/temperature/US_Hi.jpg
TodaysFronts=/graphics/fronts/td_front.jpg
TomorrowsFronts=/graphics/fronts/tmw_front.jpg
MinimumTemp=/graphics/temperature/US_Lo.jpg
and enter in the new locations and names after the equal sign (=).
- ☞ Save the file and exit. If the new locations and/or names have been typed in properly, you should be able to down-load the weather maps again.

Master Schedule

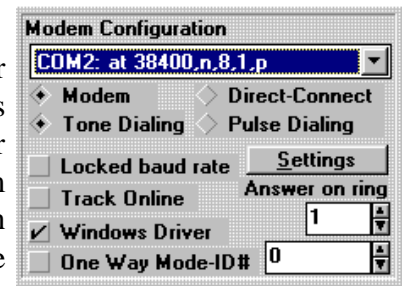
The Master Schedule setting is found in the Configuration window. You can set which schedule will automatically start displaying when the software starts running.

Set the Schedule

- ☞ From the Main Menu click on the red **CONFIGURATION** button.
- ☞ Place the cursor in the Master Schedule window.
- ☞ Erase the old schedule name and type in a new one with the .SCH extension
- ☞ Click on **OK** to return to the Main Menu.
- ☞ Note: Unless you type in a path for the schedule, it will assume the \MP directory.

Modem Configuration

This feature allows you to configure your MediaPlayer character generator for remote communications. To be sure you configure communications properly, make sure you have set your com ports to the proper specifications for your modem. If you are unsure of your modem specifications, or are encountering difficulties, refer to the instruction manual that came with your modem, or refer to **Troubleshooting** in the **Communications** section.



TEBBS - skip this section.

Configuring your modem

The following procedure will configure your MediaPlayer character generator for remote communications.

- ☞ Locate the box under the heading **Modem Configuration** at the top right-hand side of the Configuration menu.
- ☞ Either click on the data entry in this box (usually set to **none**), or click on the small grey arrow to the right of the box. This should display a list of currently available com ports.
- ☞ Click on the com port you wish to use. This should place the com port you selected in the data entry box under the Modem Configuration heading.
- ☞ Next, select either **Modem** or **Direct-Connect** depending on whether or not you are using a modem or null-modem cable for communication.
- ☞ If you are using a modem, select whether you want to use **Tone Dialing** or **Pulse Dialing**.
- ☞ To check your modem settings, click on the **Settings** button. This should open up the **Modem Settings** window. From here you can change the setting of your **Modem Initialization String**, **Modem Dial String**, as well as the **Command Time-out** setting (in seconds). When you are finished changing your modem settings, click on **OK**.
- ☞ Finally, select which options you wish to include during communications. You can choose from **Locked baud rate** (which sets the rate at which your modem will connect to a fixed value), **Track Online** (which creates a text file that tracks the progress of your communications), **Windows Driver** (which makes use of the Windows communication drivers), and **One-Way Mode-ID#** (which has been designed for future use with satellite communications). You can also select the number of rings you want your modem to make before it picks up, by adjusting the value in the **Answer on ring** data box.
- ☞ When you are finished configuring your communications, click on **OK** to close the Configuration Menu. If you encounter difficulties or want further information, please refer to the **Modem Troubleshooting** guide.

Rainfall

In the Configuration menu there is a Rainfall Button. This button gives you access to configure the starting settings for rainfall readings for the various compatible weather stations. To use the Rainfall button, follow these steps.

TEBBS - skip this section.

Configuring Rainfall Readings Using the Rainfall Button

- ☞ First, click on the **RAINFALL BUTTON**.
- ☞ Click on the **WEEK TO DATE** reading in the New column.
- ☞ Type in the correct value of rainfall for the Week to Date. Make sure that the value you enter is in inches.
- ☞ Click on the **MONTH TO DATE** reading in the New column.
- ☞ Type in the correct value of rainfall for the Month to Date. Make sure that the value you enter is in inches.
- ☞ Click on the **YEAR TO DATE** reading in the New column.
- ☞ Type in the correct value of rainfall for the Year to Date. Make sure that the value you enter is in inches.

Scheduler Access

This feature allows you to enable or disable access to your scheduler. While Scheduler access is disabled, you cannot open the Text Scheduler or the Graphic Scheduler.

Enabling Scheduler Access

The following procedure will enable access to your Text Scheduler, and Graphic Scheduler (if you are using the GRAC or TEC).

- ☞ Click on the **CONFIGURATION BUTTON** of the Main menu.
- ☞ Locate the Scheduler Access heading, and click on the **ENABLED** button.

Disabling Scheduler Access

The following procedure will disable access to your Text Scheduler, and Graphic Scheduler (if you are using the GRAC or TEC).

- ☞ Click on the **CONFIGURATION BUTTON** of the Main menu.
- ☞ Locate the Scheduler Access heading, and click on the **DISABLED** button.

Terminal Mode

This feature allows you to switch your Terminal mode back and forth between Creation mode and Remote mode. Creation mode sets up your system to send remote communications. Remote mode, on the other hand, sets up your system to receive remote communications. If you are using Display-only software, your system is locked in remote mode, and can therefore only receive remote communications.

Display Only Systems and TEBBS - skip this section.

Setting your terminal to Creation mode

The following procedure will set your terminal to Creation mode.

- ☞ Click on the **CONFIGURATION BUTTON** of the Main menu.
- ☞ Locate the Terminal mode heading, and click on the **CREATION MODE** button.

Note: If you are resetting your terminal mode from Remote mode to Creation mode, you will need to click on the **ON-LINE BUTTON** of the Main menu in order for the new change to take effect.

Setting your terminal to Remote mode

The following procedure will set your terminal to Remote mode.

- ☞ Click on the Configuration button of the Main menu.
- ☞ Locate the Terminal mode heading, and click on the **REMOTE MODE** button.

Note: If you are setting your terminal mode to Remote mode you will need to click on the **ON-LINE BUTTON** of the Main menu in order for the new change to take effect.

Tracking

This feature allows you to track which files have been displayed. This feature has two purposes: (A) verification for billing a client and (B) for trouble shooting.

Tracking Device

- ☞ There are two different types of tracking devices, **Printer** or **Disk**. This simply sends the output of the Tracking Style to either the printer or a file called **TRACKING.FIL** or both.
- ☞ If you select Printer, you must be sure that the proper printer has been set as a default in the Windows Configuration Printers section.
- ☞ If you select disk, a file called **TRACKING.FIL** will be created in the \MP directory.



Tracking Style

- ☞ If the Off button is checked, no tracking information will be kept.
- ☞ There are two types of tracking styles, **Total Count** or **Every Display**.
- ☞ **Total Count** will count every time an entry is displayed and give you the total number of times each file name was displayed.
- ☞ **Every Display** will right a record every time a new page, picture or animation is displayed. The time and date of each entry is logged along with the file name that is displayed.



WeatherBank Internet Down-Load

The GRAC is able to down-load weather maps from the WeatherBank Internet site. There is a fee in order to access these maps which is payable to WeatherBank. Once you have authorization to access the maps, you can automatically down-load them in the same manner as you would any other graphic off the Internet.

Get Authorization

- ☞ Contact D.Co Marketing, Inc. for preferred pricing. We will get your account set up and give you your Nickname and Password.
- ☞ You will be billed directly by WeatherBank.

Configure the Internet Interface

- ☞ From the Main Menu click on the red **CONFIGURATION** button and then click on the **INTERNET** button to bring up the Internet Configuration window.
- ☞ If you have a constant connection to the Internet then leave the Path to Program blank.
- ☞ If you are using Trumpet Winsock or Quarterdeck Winsock then type in the program path and name in the Path to Program space or click on **BROWSE** to fill in this space.
- ☞ NOTE: The system initiates the winsock which uses the login script file to dial the phone and enter parameters, passwords, etc.
- ☞ Click on the ▼ at the end of the Program Used window to select the type of connection you will be using. The Message Window will change in accordance to the type of connection you have chosen.

Set up the Internet File Window

This setup only needs to be done once even though you will be down-loading many graphics.

- ☞ Click on **ADD** at the bottom of the window to bring up the Internet File window.

Set the following parameters:

- ☞ Local File Name: <Not Required, leave blank>
- ☞ Internet File Name: **WWW.WEATHERBRIEF.COM**
- ☞ Update Every: <Required> (ALL WeatherBank graphics will be updated this often)
- ☞ Select **BINARY**
- ☞ Select **USE WEB ACCESS HTTP://**
- ☞ Select **RECEIVE FILES**
- ☞ User Name: <enter your Nick Name here>
- ☞ Password: <enter your Password here>
- ☞ Account: **WBRIEF.INI** (The wbrief.ini file can be renamed in the Windows directory, but then it must also be changed accordingly in the Account entry.)
- ☞ Click on **OK** to return to the Internet Configuration window.

Select the Graphic Maps

- ☞ Browse the WeatherBank web site and find the graphics you want to down-load.
- ☞ For each graphic do the following:
 - ☞ Right-click on the graphic and then click on **PROPERTIES**.
 - ☞ Now write down the Address (URL) of the graphic. You will be told where to place these addresses in the Weather ini file in the next section. The address consists of

TEC and TEBBS - skip this section.

TEC and TEBBS - skip this section.

everything *after* <http://www.weatherbrief.com/>.

Update the Weather INI File

In the Windows directory you will find a file called WBRIEF.INI in which you will enter in information on each graphic you wish to down-load.

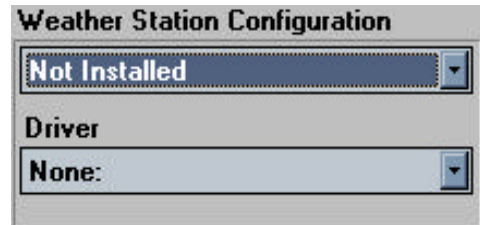
- ☞ Open this file with Note Pad.
- ☞ There are 4 groups in this ini file: Account, Directory, Files, and Example Files Group. Don't do anything to the Account or Directory group! You will enter information into the Files group which will look just like the examples in the Example Files Group.
- ☞ This is an example: **todayh.gif=/%dir%/grafx/html1.gif**
 - ☞ **todayh.gif** is the name you choose for the graphic. Enter any file name which is descriptive for the graphic map.
 - ☞ **=%dir%/** should always be entered exactly as shown, it tells the computer what directory your graphic is in.
 - ☞ **grafx/html.gif** is the address WeatherBank gives the graphic. This is where you enter in the address and name of the graphic you wrote down in the above section "Select the Graphic Maps".
- ☞ Save the file and exit Note Pad.
- ☞ Note: If the WeatherBank graphic is a GIF, then your file name must also be GIF. This is true for all extensions.
- ☞ Note: The GRAC is compatible with GIF, JPG, PCX, and BMP type graphics. Down-loading a graphic of a different type will not work.
- ☞ Note: There should be no spaces between any of the characters, just like in the example.

Initiate the automatic Down-Load

- ☞ From the Main Menu click on the red **CONFIGURATION** button and then click on the **INTERNET** button to bring up the Internet Configuration window.
- ☞ Click on **GET NOW**. The weather maps will be down-loaded from the Internet along with any other graphics you have set up to down-load from the Internet.
- ☞ From this point, the weather maps will be down-loaded every XX hours as you specified while setting up the Internet File window.

Weather Station

In order to allow the different weather stations to display weather information in the GRAC or TEC, the proper configuration must be set up for each different weather station. For the settings for each specific weather station please see the guide on the weather station that you have. The weather station is configured in two separate but necessary parts. These are the Weather Station Configuration and the Driver.



TEBBS - skip this section.

Weather Station Configuration

Select the COM port that your weather station is on.

- ☞ First click on the small down arrow (τ) of the window under **Weather Station Configuration**.
- ☞ Select the COM port you will use for the weather station. Remember that the mouse is usually on COM port #1. Look over the settings and determine if it is necessary to change your port settings to coincide with the settings for your weather station.

Driver

- ☞ First click on the small down arrow (τ) of the window under **Driver**.
- ☞ Select the driver for your weather station. The drivers that are available for weather stations are the following: WTR_DAVI.DLL for the Davis weather station, WTR_HKIT.DLL for the HeathKit weather station, WTR_ULTI.DLL for the Temp and Wind Only or Ultimeter Weather Station, WTR_WR25.DLL for the Texas Weather Instruments WRL-25 weather station, and WTR_WS14.DLL for Weather Port weather station.
- ☞ Click on **OK**.

Weather Station - Davis

Weather information can be accessed by the use of the Davis Weather Station. It is not necessary to load any of the Davis Software, since all drivers and DLL files that are required are already included in the D.Co Marketing, Inc. software.

Set up

- ☞ First set up the Davis weather unit as outlined in its manual. After it is setup with all instruments attached, continue reading below.
- ☞ Decide which COM port you will use for the Davis (usually COM port #2, since COM port #1 is usually used by the mouse).
 - ☞ If using the mouse and Davis Weather Station:
 - COM port #1 set to IRQ 4 - for the mouse.
 - COM port #2 set to IRQ 3 - for the Davis Weather Station
 - ☞ If using the mouse, modem and Davis Weather Station:
 - COM port #1 set to IRQ 4 - for the mouse.
 - COM port #2 set to IRQ 3 - for the Davis Weather Station
 - COM port #4 set to IRQ 5 (or whatever is available) - for the modem.
- ☞ Next you should go to the Main Menu of the GRAC (or TEC) and click on the red **CONFIGURATION** button. Then click on the **PORTS** button and set it to your COM Port (usually COM 2) that the Davis is connected to. Set the port to the following: **Baud Rate should be 2400, Data bits should be 8, Parity should be None, Stop Bits should be 1, and Flow Control should be XON/XOFF**. Click on **OK** and then click on **CLOSE**.
- ☞ Now you are back to the CONFIGURATION menu.
- ☞ Under the Weather Station Configuration heading, set the COM port to which the Davis is connected (usually COM 2) by clicking on (τ) and then clicking on the line with the proper COM port.
- ☞ Now set the proper Driver by clicking on (τ), and finally clicking on **Davis:WTR_DAVI.DLL**.
- ☞ Click on **OK** and you will be back at the Main Menu.

Make a Page with Weather info

- ☞ Everything is now ready. The last step is to go to the text editor and try to include some weather on a page. Click on the green **TEXT EDITOR** button.
- ☞ To add weather info to the page please refer to the Text Editor sections on the Temperature, Pressure, Humidity, Wind, and Rain buttons.

Trouble Shooting

- ☞ When editing a page that has weather information on it, disconnect the Davis from the computer. This will prevent the program from locking up or crashing.
- ☞ Please refer to chapter 8 of the Davis manual for more trouble shooting situations.

Weather Station - Heathkit

TEBBS - skip this section.

Weather information can be accessed by the use of the Heathkit ID-5001 Weather Station. It is not necessary to load any of the Heathkit Software, since all drivers and DLL files that are required are already included in the D.Co Marketing, Inc. software.

Set up

- ☞ First set up the Heathkit weather unit as outlined in its manual. After it is setup with all gauges attached, continue reading below.
- ☞ Decide which COM port you will use for the Heathkit (usually COM port #2, since COM port #1 is usually used by the mouse).
 - ☞ If using the mouse and Heathkit Weather Station:
COM port #1 set to IRQ 4 - for the mouse.
COM port #2 set to IRQ 3 - for the Heathkit Weather Station
 - ☞ If using the mouse, modem and Heathkit Weather Station:
COM port #1 set to IRQ 4 - for the mouse.
COM port #2 set to IRQ 3 - for the Heathkit Weather Station
COM port #4 set to IRQ 5 (or whatever is available) - for the modem.
- ☞ Next you should go to the Main Menu of the GRAC (or TEC) and click on the red **CONFIGURATION** button. Then click on the **PORTS** button and set it to your COM Port (usually COM 2) that the Heathkit is connected to. Set the port to the following: **Baud Rate should be 9600, Data bits should be 8, Parity should be None, Stop Bits should be 1, and Flow Control should be XON/XOFF.** Click on **OK** and then click on **CLOSE**.
 - ☞ **Note:** The baud rate on the Heathkit can be changed to a slower rate. Make sure it is set to 9600 baud (fastest) by pressing the **BAUD** key on the Heathkit. The baud rate will display in place of the time.
 - ☞ If it says 9600 then press the **ENTER** key on the Heathkit. It is set correctly.
 - ☞ If it does not say 9600 then press the **BAUD** key on the Heathkit until it does say 9600 and then press the **ENTER** key on the Heathkit. It is now set correctly.
- ☞ Now you are back to the CONFIGURATION menu.
- ☞ Under the Weather Station Configuration heading, set the COM port to which the Heathkit is connected (usually COM 2) by clicking on (τ) and then clicking on the line with the proper COM port.
- ☞ Now set the proper Driver by clicking on (τ), and finally clicking on **Heathkit:WTR_HKIT.DLL**.
- ☞ Click on **OK** and you will be back at the Main Menu.

Make a Page with Weather info

- ☞ Everything is now ready. The last step is to go to the text editor and try to include some weather on a page. Click on the green **TEXT EDITOR** button.
- ☞ To add weather info to the page please refer to the Text Editor sections on the Temperature, Pressure, Humidity, Wind, and Rain buttons.

TEBBS - skip this section.

Trouble Shooting

- ☞ Temperature reading is way over 100 F but it is really room temperature.
 - ☞ Both temperature sensor cables *must* be connected to the back of the Heathkit before it will operate properly. Also see Normal Operating Characteristics.
- ☞ I hooked up the backup battery and now the Heathkit seems to be dead.
 - ☞ If you install the backup battery *before* applying AC power, the Heathkit will not initialize properly and will appear dead when plugged in. To correct this, disconnect the battery, plug in the Heathkit, and reconnect the battery.
- ☞ The Heathkit, but not the GRAC (or TEC), lost power and then, when power was restored, the weather readings continued to display <TEMP>, <BAR>, <HUMID>, <WIND>, or <RAIN>.
 - ☞ The backup battery is not connected or is dead. Reconnect or replace the battery.
 - ☞ If you are unable to use a backup battery for whatever reason:
 - ☞ If you are where the GRAC (or TEC) is, then stop the display by pressing the **ESC** key and then restarting the display.
 - ☞ If you can not get to the GRAC (or TEC) because it is at a remote site, then connect to it using the ON LINE commands and reboot the remote computer.
- ☞ The Heathkit does not remember what the current rain fall is after a power outage. The Weekly, Monthly, and Yearly Rain totals also do not have the current rain fall added in.
 - ☞ The backup battery is not connected or is dead. Reconnect or replace the battery.
- ☞ I don't know if the computer is talking to the Heathkit properly.
 - ☞ Using Terminal you can easily verify this. Quit the GRAC (or TEC) program.
 - ☞ Double click on the **ACCESSORIES** Group window and then Double click on the **TERMINAL** Icon.
 - ☞ Click on **SETTINGS** and then click on **COMMUNICATIONS**.
 - ☞ Under the word Connectors, click on the COM port you think you have the Heathkit connected to (usually COM 2).
 - ☞ Make sure the baud rate is 9600, the data bits is 8, the stop bits is 1, the parity is none, and the flow control is Xon/Xoff.
 - ☞ Make sure you use all UPPER CASE LETTERS when typing all the terminal commands.
 - ☞ Type in a command from Table 1 and press the **ENTER** key.

Table 1:

<u>Command</u>	<u>What it is</u>	<u>Result</u>
ATRD	Read Date	yy/mm/dd
ATRHI	Read Humidity Indoor	hnn
ATRRR	Read Rain Rate	Rrnnnnn
ATRTO	Read Temperature Outdoor	Tnnn
ATRWA	Read Wind Average	wnnn (nnn=degrees)

- ☞ The results returned should match the result pattern. If you receive strange results, make sure all the settings are correct. Try plugging into a different COM port. Check the cable going into the Heathkit.

Note: The following is taken directly from Section 4 of the Heathkit manual.

Normal Operating Characteristics

The following characteristics of the ID-5001 Advanced Weather Computer are considered normal. Become familiar with these characteristics before you service the unit. By doing so, you'll save trouble shooting time.

- ☞ During the 10-second backlight warmup time after turn-on, the ends of the fluorescent lamp will glow slightly.
- ☞ During battery backup operation, a NEDA 1604 9-volt battery will typically last about 18 hours. DC current drain will vary from about 17mA to 30mA.
- ☞ If you install a new battery while the power is off, the Weather Computer may not operate when you plug it back into an AC outlet.
- ☞ If an ID-5001 with battery backup loses AC power, the LCD will still be active. This is usually only noticeable if the light shield has been removed and a bright light is shining behind the LCD. The reason is that the battery-backed supply, VCCB, provides power to the LCD drivers.
- ☞ In the first production run, the peak wind gust reading would randomly change when a battery-backed ID-5001 would momentarily lose AC power. This was especially noticeable if the peak reading was a low value before power loss. In later production runs, this problem was fixed by changing the EPROM at U418 to part number 444-475-3.
- ☞ Though your system monitor is less than 16 kilobytes, Engineering selected a 32K EPROM at U418. The upper 16K is disabled by grounding the A14 line.
- ☞ If the temperature sensors are disconnected from the back of the Weather Computer, the temperature, humidity, and barometer may give false readings or the unit may shut down. Also, the display brightness may behave erratically due to false readings from the light sensor. This is because the temperature sensor interface circuits are over-driving the electronic switch at U405 and are causing crosstalk.

TEBBS - skip this section.

Weather Station - Temp & Wind Only (Ultimeter)

Weather information can be accessed by the use of the Temp & Wind Only (Ultimeter) Weather Station. It is not necessary to load any of the Temp & Wind Only Software, since all drivers and DLL files that are required are already included in the D.Co Marketing, Inc. software.

Set up

- ☞ First set up the Temp & Wind Only weather unit as outlined in its manual. After it is setup with all instruments attached, continue reading below.
- ☞ Decide which COM port you will use for the Temp & Wind Only (usually COM port #2, since COM port #1 is usually used by the mouse).
 - ☞ If using the mouse and Temp & Wind Only Weather Station:
 - COM port #1 set to IRQ 4 - for the mouse.
 - COM port #2 set to IRQ 3 - for the Temp & Wind Only Weather Station
 - ☞ If using the mouse, modem and Temp & Wind Only Weather Station:
 - COM port #1 set to IRQ 4 - for the mouse.
 - COM port #2 set to IRQ 3 - for the Temp & Wind Only Weather Station
 - COM port #4 set to IRQ 5 (or whatever is available) - for the modem.
- ☞ Plug the telephone jack connector into the right side of the Temp & Wind Only base unit.
- ☞ **NOTE: When you connect the power to the Temp & Wind Only base unit (with the computer cable plugged into the Temp & Wind Only base unit), immediately watch the LCD screen of the base unit. If something starts to display on the LCD screen, but it goes blank right away, immediately unplug the power to the base unit. Unplug the computer cable (telephone jack) from the side of the Temp & Wind Only base unit. Then try connecting the power again. If the LCD screen comes on and keeps displaying, there is a problem with your computer cable. Do not use that computer cable. If there is a problem with the computer cable and the power is left on to the Temp & Wind Only base unit, it can burn out the base unit. If the computer cable is plugged in and the power is applied and the LCD continues to display information, then everything is OK, and you can proceed.**
- ☞ Next you should go to the Main Menu of the GRAC (or TEC) and click on the red **CONFIGURATION** button. Then click on the **PORTS** button and set it to your COM Port (usually COM 2) that the Temp & Wind Only is connected to. Set the port to the following: **Baud Rate should be 2400, Data bits should be 8, Parity should be None, Stop Bits should be 1, and Flow Control should be Hardware.** Then click on **OK** and then click on **CLOSE**.
- ☞ Now you are back to the CONFIGURATION menu.
- ☞ Under the Weather Station Configuration heading, set the COM port to which the Temp & Wind Only is connected (usually COM 2) by clicking on (τ) and then clicking on the line with the proper COM port.
- ☞ Now set the proper Driver by clicking on (τ), and finally clicking on

TEBBS - skip this section.

TEBBS - skip this section.

Ultimeter:WTR_ULTI.DLL.

- ☞ Click on **OK** and you will be back at the Main Menu.

Make a Page with Weather info

- ☞ Everything is now ready. The last step is to go to the text editor and try to include some weather on a page. Click on the green **TEXT EDITOR** button.
- ☞ To add weather info to the page please refer to the Text Editor sections on the Temperature and Wind buttons.

Weather Station - Texas Weather Instruments

Weather information can be accessed by the use of the Texas Weather Instruments Weather Station. It is not necessary to load any of the Texas Weather Instruments Software, since all drivers and DLL files that are required are already included in the D.Co Marketing, Inc. software.

TEBBS - skip this section.

Set up

- ☞ First set up the Texas Weather Instruments weather unit as outlined in its manual. After it is setup with all instruments attached, continue reading below.
- ☞ Set the Baud Rate on the Texas Weather Instruments Weather Station as follows.
 - ☞ Press **Select** and **Average** at the same time on the Texas Weather Instruments Weather Station panel.
 - ☞ Press **Select** 3 more times to enter the Baud Rate Setting.
 - ☞ Press **Maximum** and **Minimum** to adjust the Baud Rate to 19200. **Note:** the display will only show 19.2.
- ☞ Decide which COM port you will use for the Texas Weather Instruments (usually COM port #2, since COM port #1 is usually used by the mouse).
 - ☞ If using the mouse and Texas Weather Instruments Weather Station:
 - COM 1 set to IRQ 4 - for the mouse.
 - COM 2 set to IRQ 3 - for the Texas Weather Instruments Weather Station
 - ☞ If using the mouse, modem and Texas Weather Instruments Weather Station:
 - COM 1 set to IRQ 4 - for the mouse.
 - COM 2 set to IRQ 3 - for the Texas Weather Instruments Weather Station
 - COM 4 set to IRQ 5 (or whatever is available) - for the modem.
- ☞ Next you should go to the Main Menu of the GRAC (or TEC) and click on the red **CONFIGURATION** button. Then click on the **PORTS** button and set it to your COM Port (usually COM 2) that the Texas Weather Instruments is connected to. Set the port to the following: **Baud Rate should be 19200, Data bits should be 8, Parity should be None, Stop Bits should be 1, and Flow Control should be XON/XOFF.** Click on **OK** and then click on **CLOSE**.
- ☞ Now you are back to the CONFIGURATION menu.
- ☞ Under the Weather Station Configuration heading, set the COM port to which the Texas Weather Instruments is connected (usually COM 2) by clicking on (τ) and then clicking on the line with the proper COM port.
- ☞ Set the proper Driver by clicking on (τ), and click on **WRL-25:WTR_WR25.DLL**.
- ☞ Click on **OK** and you will be back at the Main Menu.

Make a Page with Weather info

- ☞ Everything is now ready. The last step is to go to the text editor and try to include some weather on a page. Click on the green **TEXT EDITOR** button.
- ☞ To add weather info to the page please refer to the Text Editor sections on the Temperature, Pressure, Humidity, Wind, and Rain buttons.

Weather Station - Weatherport

Weather information can be accessed by the use of the Weatherport Weather Station. It is not necessary to load any of the Weatherport software, since all drivers and DLL files that are required are already included in the D.Co Marketing, Inc. software.

Set up

- ☞ First set up the Weatherport weather unit as outlined in its manual. After it is setup with all instruments attached, continue reading below.
- ☞ Decide which COM port and IRQ you will use for the Weatherport (usually COM port #2, since COM port #1 is usually used by the mouse) as follows.
 - ☞ If using the mouse and Weatherport Weather Station:
COM port #1 set to IRQ 4 - for the mouse.
COM port #2 set to IRQ 3 - for the Weatherport Weather Station
 - ☞ If using the mouse, modem and Weatherport Weather Station:
COM port #1 set to IRQ 4 - for the mouse.
COM port #2 set to IRQ 3 - for the Weatherport Weather Station
COM port #4 set to IRQ 5 (or whatever is available) - for the modem.
- ☞ Next you should go to the Main Menu of the GRAC (or TEC) and click on the red **CONFIGURATION** button. Then click on the **PORTS** button and set it to your COM Port (usually COM 2) that the Weatherport is connected to. Set the port to the following: **Baud Rate should be 9600, Data bits should be 8, Parity should be None, Stop Bits should be 1, and Flow Control should be XON/XOFF**. Click on **OK** and then click on **CLOSE**.
- ☞ Under the Weather Station Configuration heading, set the COM port to which the Weatherport is connected (usually COM 2) by clicking on (τ) and then clicking on the line with the proper COM port.
- ☞ Now set the proper Driver by clicking on (τ), and finally clicking on **Weatherport WS-14E:WTR_WS14.DLL**.
- ☞ Click on **OK** and you will be back at the Main Menu.

Make a Page with Weather info

- ☞ Everything is now ready. The last step is to go to the text editor and try to include some weather on a page. Click on the green **TEXT EDITOR** button.
- ☞ To add weather info to the page please refer to the Text Editor sections on the Temperature, Pressure, Humidity, Wind, and Rain buttons.

Trouble Shooting

- ☞ When editing a page that has weather information on it, disconnect the Weatherport from the computer. This will prevent the program from locking up or crashing.
- ☞ Please refer to the troubleshooting section of the Weatherport Manual for other solutions to problems.

TEBBS - skip this section.